



## Thaw and Culture Details

Cell Line Name	<b>SCR2307i</b>
WiCell Lot Number	<b>DB42057</b>
Provider	The Scripps Research Institute – Laboratory of Dr. Eric Topol
Banked By	Scripps Research Institute – Laboratory of Dr. Kristin Baldwin
Thaw and Culture Recommendations	WiCell recommends thawing 1 vial into 3 wells of a 6 well plate. WiCell recommends thawing using ROCK Inhibitor for best results.
Culture Platform	Feeder Independent
	Medium: mTeSR™1
	Matrix: Matrigel®
Protocol	WiCell Feeder Independent mTeSR™1 Medium Protocol
Passage Number	p10 These cells were cultured for 10 passages after colony picking prior to freeze. Add +1 to the passage number to best represent the overall passage number of the cells at thaw.
Date Vialied	29-August-2015
Vial Label	KBET2307i p10 AUG-29-2015
Biosafety and Use Information	Appropriate biosafety precautions should be followed when working with these cells. The end user is responsible for ensuring that the cells are handled and stored in an appropriate manner. WiCell is not responsible for damages or injuries that may result from the use of these cells. Cells distributed by WiCell are intended for research purposes only and are not intended for use in humans.

## Testing Performed by WiCell

Test Description	Test Provider	Test Method	Test Specification	Result
Karyotype by G-banding	WiCell	SOP-CH-003	Expected karyotype	See Report
Post-Thaw Viable Cell Recovery	WiCell	SOP-CH-305	Recoverable attachment after passage	Pass
Identity by STR	UW Translational Research Initiatives in Pathology Laboratory	PowerPlex 16 HS System by Promega	Defines STR profile	Pass
Sterility	Steris	ST/07	Negative	Pass
Mycoplasma	WiCell	SOP-CH-044	Negative	Pass

## Testing Reported by Provider

The Provider stated that some or all of the additional analyses listed below may have been performed for this cell line. For more information, publication and dbGaP links, where available, are provided on the cell line specific web page on the WiCell website.

- HumanCore Exome Kit
- Methylation
- Tra1-60 marker expression via flow cytometry
- Infinium® Expanded Multi-Ethnic Genotyping Array (MEGA<sup>EX</sup>)



Approval Date	Quality Assurance Approval
09-September-2016	<p style="text-align: right;">8/30/2019</p> <p>X JKG _____</p> <p><small>WiCell Quality Assurance Signed by: Gay, Jenna</small></p>

**Date Reported:** Friday, June 21, 2019

**Cell Line:** SCRP2307i-DB42057 14769

**Passage#:** 12

**Date of Sample:** 6/11/2019

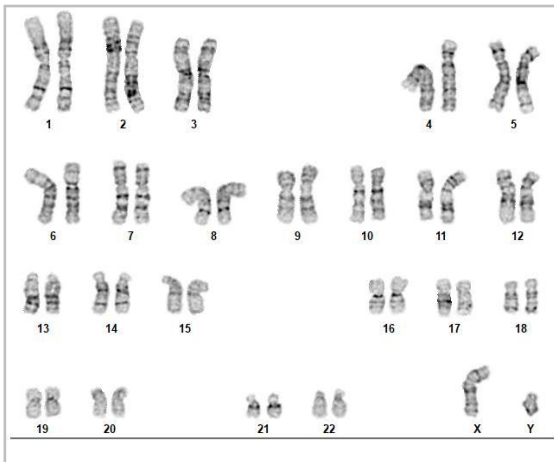
**Specimen:** Human IPS

**Results:** 46,XY

**Cell Line Sex:** Male

**Reason for Testing:** lot release testing

**Investigator:** [REDACTED], WiCell



**Cell:** 17

**Slide:** G01

**Slide Type:** Karyotype

**Total Counted:** 20

**Total Analyzed:** 8

**Total Karyogrammed:** 4

**Band Resolution:** 425 - 500

### Interpretation:

**This is a normal karyotype; no clonal abnormalities were detected at the stated band level of resolution.**

**Completed by:** [REDACTED], CG(ASCP)

**Reviewed and Interpreted by:** [REDACTED], PhD, FACMG

**Date:** \_\_\_\_\_ **Sent By:** \_\_\_\_\_ **Sent To:** \_\_\_\_\_ **QC Review By:** \_\_\_\_\_

*Limitations: This assay allows for microscopic visualization of numerical and structural chromosome abnormalities. The size of structural abnormality that can be detected is >3-10Mb, dependent upon the G-band resolution obtained from this specimen. For the purposes of this report, band level is defined as the number of G-bands per haploid genome. It is documented here as "band level", i.e., the range of bands determined from the four karyograms in this assay. Detection of heterogeneity of clonal cell populations in this specimen (i.e., mosaicism) is limited by the number of metaphase cells examined, documented here as "# of cells counted".*

*This assay was conducted solely for listed investigator/institution. The results of this assay are for research use only. Unless otherwise mutually agreed in writing, the services provided to you hereunder by WiCell Research Institute, Inc. ("WiCell") are governed solely by WiCell's Terms and Conditions of Service, found at [www.wicell.org/privacyandterms](http://www.wicell.org/privacyandterms). Any terms you may attach to a purchase order or other document that are inconsistent, add to, or conflict with WiCell's Terms and Conditions of Service are null and void and of no legal force or effect.*



HISTOLOGY - IHC - MOLECULAR - IMAGING

Department of Pathology and Laboratory Medicine  
TRIP Laboratory (Molecular)  
<https://research.pathology.wisc.edu/trip-home/>  
(608) 265-9168

# Short Tandem Repeat Analysis



Your Lab Partner

characterization@wicell.org  
(608) 316-4145

**Sample Report:**

14769-STR

**Sample Name on Tube:** 14769-STR

65.1 ng/μL, (A260/280=1.79)

**Sample Type:** Cells

**Cell Count:** ~2 million cells

**Requestor:**

WiCell Research Institute

Cytogenetics Department

**Receive Date:** 06/17/19

**Report Sent:** 06/21/19

**Assay Date:** 06/18/19

**File Name:** STR 190620 wmr

**Report Date:** 06/20/19

STR Locus	STR Genotype Repeat #	STR Genotype
FGA	16-18,18.2,19,19.2,20,20.2,21,21.2,22, 22.2, 23, 23.2, 24, 24.2, 25, 25.2, 26-30, 31.2, 43.2, 44.2,45.2, 46.2	Identifying information has been redacted to protect donor confidentiality. If more information is required, please, contact <a href="#">WiCell's Technical Support</a> .
TPOX	6-13	
D8S1179	7-18	
vWA	10-22	
Amelogenin	X,Y	
Penta_D	2.2, 3.2, 5, 7-17	
CSF1PO	6-15	
D16S539	5, 8-15	
D7S820	6-14	
D13S317	7-15	
D5S818	7-16	
Penta_E	5-24	
D18S51	8-10, 10.2, 11-13, 13.2, 14-27	
D21S11	24,24.2,25,25.2,26-28,28.2,29,29.2, 30, 30.2,31, 31.2,32,32.2,33,33.2, 34,34.2,35,35.2,36-38	
TH01	4-9,9.3,10-11,13.3	
D3S1358	12-20	

**Results:** Based on the 14769-STR cells submitted by WiCell Cytogenetics dated and received on 06/17/19, this sample (Label on Tube: 14769-STR) defines the STR profile of the human cell line SCRP2307i comprising 27 allelic polymorphisms across the 15 STR loci analyzed.

**Interpretation:** No STR polymorphisms other than those corresponding to the human SCRP2307i cell line were detected and the concentration of DNA required to achieve an acceptable STR genotype (signal/ noise) was equivalent to that required for the standard procedure (~1 ng/amplification reaction) from human genomic DNA. This result suggests that the 14769-STR sample submitted corresponds to the SCRP2307i cell line and was not contaminated with any other human stem cells or a significant amount of mouse feeder layer cells.

**Sensitivity:** Sensitivity limits for detection of STR polymorphisms unique to either this or other human cell lines is ~2-5%.

X *RMB*

Digitally Signed on 06/21/19

██████████, BA  
TRIP Laboratory, Molecular

X *WMR*

Digitally Signed on 06/21/19

██████████, PhD, Director / Co-Director  
UWHC Molecular Diagnostics Laboratory / UWSMPH TRIP Laboratory

Testing was accomplished by analysis of human genetic polymorphisms at STR loci. This methodology has not yet been approved by the FDA and is for investigational use only.

**Acknowledge TRIP in your publications, posters & presentations. For details, see: <https://research.pathology.wisc.edu/acknowledging-trip/>**  
Unless otherwise mutually agreed in writing, the services provided to you hereunder by WiCell Research Institute, Inc. ("WiCell") are governed solely by WiCell's Terms and Conditions of Service, found at <https://www.wicell.org/media.acux/ca76d97c-862a-43f3-b02a-ab2d1e619100>. Any terms you may attach to a purchase order or other document that are inconsistent, add to, or conflict with WiCell's Terms and Conditions of Service are null and void and of no legal force or effect.

# Native Product Sterility Report



WiCell  
504 S Rosa Road, Rm 101  
Madison, WI 53719

SAMPLE #: 19080059  
DATE RECEIVED: 01-Aug-19  
TEST INITIATED: 02-Aug-19  
TEST COMPLETED: 16-Aug-19

SAMPLE NAME / DESCRIPTION:      SCRP2310i    DB42060    14929  
   SCRP2307i    DB42057    14930  
   SCRP2407i    DB42063    14931  
   SCRP2508i    DB42079    14932  
   STAN357i-298C2    DB44224    14933  
   STAN359i-442C11    DB44237    14934  
   PENN025i-71-58    DB35127    14935  
   PENN041i-177-46    DB34934    14936  
   STAN378i-886C4    DB44665    14937  
   STAN275i-732C1    DB35789    14938

UNIQUE IDENTIFIER:                      NA

TEST RESULTS:

# Tested	# Positives (Growth)	- Control
10	0	2 Negatives

TEST SUMMARY:

# Samples	Media Type	Volume (mL)	Incubation Temperature (° C)	Incubation Duration (Days)
10	TSB	40	20-25	14
10	FTG	40	30-35	14

REFERENCE:                                      Processed according to LAB-003: Sterility Test Procedure

PD #:    000053

TEST METHODOLOGY:                          USP - Direct Transfer

COMMENTS:                                      NA

REVIEWED BY \_\_\_\_\_ 

DATE 16 Aug 19

Specific test results may not be indicative of the characteristics of any other samples from the same lot or similar lots. This test report shall not be reproduced, except in full, without prior written approval. Liability is limited to the costs of the tests. Results applied to samples as received.



# Mycoplasma Assay Report

PCR-based assay performed by WiCell

Lot Release Testing

11Jun19

FORM SOP-CH-044.03

Version B Edition 02

#	Sample Name	Result	Comments/Suggestions
1	SCR2307i-DB42057 14769	Negative	Band was not seen at 270bp, indicating the absence of mycoplasma
2	Positive (+) Control	Positive	
3	Negative (-) Control	Negative	

**Reported by:** Katie Remondini, Cell Culture Specialist

**Reviewed by:** Brenna Anderson, Research Specialist - Cytogenetics

**Date:** \_\_\_\_\_ **Sent By:** \_\_\_\_\_ **Sent To:** \_\_\_\_\_

*Unless otherwise mutually agreed in writing, the services provided to you hereunder by WiCell Research Institute, Inc. ("WiCell") are governed solely by WiCell's Terms and Conditions of Service, found at [www.wicell.org/privacyandterms](http://www.wicell.org/privacyandterms). Any terms you may attach to a purchase order or other document that are inconsistent, add to, or conflict with WiCell's Terms and Conditions of Service are null and void and of no legal force or effect.*

*A gel image is available upon request.*